



Title Plan - LT 526814

Survey Number LT 526814
Surveyor Reference 37004 Arran Point S4
Surveyor Kendall Lisa Reid
Survey Firm Wood & Partners Consultants Ltd
Surveyor Declaration

Survey Details

Dataset Description Lots 44 - 51, 54 - 68, 84 - 98, 601, 602, 801, 806, 900, 901 and 1005 Being a Subdivision of Lot 1004 DP 509751

Status Initiated

Land District North Auckland **Survey Class** Class A

Submitted Date **Survey Approval Date**
Deposit Date

Territorial Authorities

Auckland Council

Comprised In

CT 799957

Created Parcels

Parcels	Parcel Intent	Area	CT Reference
Lot 44 Deposited Plan 526814	Fee Simple Title	0.0522 Ha	855936
Lot 45 Deposited Plan 526814	Fee Simple Title	0.0522 Ha	855937
Lot 46 Deposited Plan 526814	Fee Simple Title	0.0522 Ha	855938
Lot 47 Deposited Plan 526814	Fee Simple Title	0.0522 Ha	855939
Lot 48 Deposited Plan 526814	Fee Simple Title	0.0651 Ha	855940
Lot 49 Deposited Plan 526814	Fee Simple Title	0.0528 Ha	855941
Lot 50 Deposited Plan 526814	Fee Simple Title	0.0536 Ha	855942
Lot 51 Deposited Plan 526814	Fee Simple Title	0.0650 Ha	855943
Lot 58 Deposited Plan 526814	Fee Simple Title	0.0517 Ha	855944
Lot 88 Deposited Plan 526814	Fee Simple Title	0.0520 Ha	855945
Lot 89 Deposited Plan 526814	Fee Simple Title	0.0520 Ha	855946
Lot 92 Deposited Plan 526814	Fee Simple Title	0.0661 Ha	855947
Lot 93 Deposited Plan 526814	Fee Simple Title	0.0663 Ha	855948
Lot 94 Deposited Plan 526814	Fee Simple Title	0.0699 Ha	855949
Lot 97 Deposited Plan 526814	Fee Simple Title	0.0555 Ha	855950
Lot 98 Deposited Plan 526814	Fee Simple Title	0.0525 Ha	855951
Lot 601 Deposited Plan 526814	Fee Simple Title	0.0203 Ha	Multiple
Lot 900 Deposited Plan 526814	Vesting on Deposit for Road	0.4499 Ha	
Lot 901 Deposited Plan 526814	Vesting on Deposit for Road	0.3425 Ha	
Lot 801 Deposited Plan 526814	Vesting on Deposit for Local Purpose Reserve	0.0720 Ha	855976
Lot 68 Deposited Plan 526814	Fee Simple Title	0.0519 Ha	855952

Title Plan - LT 526814

Created Parcels

Parcels	Parcel Intent	Area	CT Reference
Lot 96 Deposited Plan 526814	Fee Simple Title	0.0652 Ha	855953
Lot 602 Deposited Plan 526814	Fee Simple Title	0.0220 Ha	Multiple
Lot 55 Deposited Plan 526814	Fee Simple Title	0.0528 Ha	855954
Lot 59 Deposited Plan 526814	Fee Simple Title	0.0515 Ha	855955
Lot 62 Deposited Plan 526814	Fee Simple Title	0.0519 Ha	855956
Lot 61 Deposited Plan 526814	Fee Simple Title	0.0650 Ha	855957
Lot 60 Deposited Plan 526814	Fee Simple Title	0.0650 Ha	855958
Lot 63 Deposited Plan 526814	Fee Simple Title	0.0519 Ha	855959
Lot 64 Deposited Plan 526814	Fee Simple Title	0.0519 Ha	855960
Lot 65 Deposited Plan 526814	Fee Simple Title	0.0519 Ha	855961
Lot 66 Deposited Plan 526814	Fee Simple Title	0.0519 Ha	855962
Lot 67 Deposited Plan 526814	Fee Simple Title	0.0519 Ha	855963
Lot 54 Deposited Plan 526814	Fee Simple Title	0.0652 Ha	855964
Lot 56 Deposited Plan 526814	Fee Simple Title	0.0527 Ha	855965
Lot 57 Deposited Plan 526814	Fee Simple Title	0.0518 Ha	855966
Area AM Deposited Plan 526814	Land Covenant		
Area AN Deposited Plan 526814	Land Covenant		
Area AO Deposited Plan 526814	Land Covenant		
Area AP Deposited Plan 526814	Land Covenant		
Area AQ Deposited Plan 526814	Land Covenant		
Area AR Deposited Plan 526814	Land Covenant		
Area AS Deposited Plan 526814	Land Covenant		
Area AT Deposited Plan 526814	Land Covenant		
Area AU Deposited Plan 526814	Land Covenant		
Area AV Deposited Plan 526814	Land Covenant		
Area AL Deposited Plan 526814	Land Covenant		
Area AW Deposited Plan 526814	Land Covenant		
Area AX Deposited Plan 526814	Land Covenant		
Area BP Deposited Plan 526814	Land Covenant		
Area BQ Deposited Plan 526814	Land Covenant		
Area BR Deposited Plan 526814	Land Covenant		
Area BS Deposited Plan 526814	Land Covenant		
Area BT Deposited Plan 526814	Land Covenant		
Area AI Deposited Plan 526814	Land Covenant		
Area AJ Deposited Plan 526814	Land Covenant		
Area AK Deposited Plan 526814	Land Covenant		
Area AG Deposited Plan 526814	Land Covenant		
Area CT Deposited Plan 526814	Land Covenant		
Area CS Deposited Plan 526814	Land Covenant		
Area DC Deposited Plan 526814	Land Covenant		
Area DB Deposited Plan 526814	Land Covenant		
Area DA Deposited Plan 526814	Land Covenant		
Area CZ Deposited Plan 526814	Land Covenant		
Area CY Deposited Plan 526814	Land Covenant		

Title Plan - LT 526814

Created Parcels

Parcels	Parcel Intent	Area	CT Reference
Area CX Deposited Plan 526814	Land Covenant		
Area CW Deposited Plan 526814	Land Covenant		
Area FA Deposited Plan 526814	Land Covenant		
Area FB Deposited Plan 526814	Land Covenant		
Area FC Deposited Plan 526814	Land Covenant		
Area FD Deposited Plan 526814	Land Covenant		
Area FE Deposited Plan 526814	Land Covenant		
Area FF Deposited Plan 526814	Land Covenant		
Area FG Deposited Plan 526814	Land Covenant		
Area FH Deposited Plan 526814	Land Covenant		
Area FI Deposited Plan 526814	Land Covenant		
Area FJ Deposited Plan 526814	Land Covenant		
Area FK Deposited Plan 526814	Land Covenant		
Area FL Deposited Plan 526814	Land Covenant		
Area FM Deposited Plan 526814	Land Covenant		
Area FN Deposited Plan 526814	Land Covenant		
Area CV Deposited Plan 526814	Land Covenant		
Area FO Deposited Plan 526814	Land Covenant		
Area FP Deposited Plan 526814	Land Covenant		
Area FQ Deposited Plan 526814	Land Covenant		
Area FR Deposited Plan 526814	Land Covenant		
Area FS Deposited Plan 526814	Land Covenant		
Area FT Deposited Plan 526814	Land Covenant		
Area FU Deposited Plan 526814	Land Covenant		
Area FV Deposited Plan 526814	Land Covenant		
Area AH Deposited Plan 526814	Land Covenant		
Lot 95 Deposited Plan 526814	Fee Simple Title	0.0655 Ha	855967
Lot 91 Deposited Plan 526814	Fee Simple Title	0.0739 Ha	855968
Lot 84 Deposited Plan 526814	Fee Simple Title	0.0650 Ha	855969
Lot 85 Deposited Plan 526814	Fee Simple Title	0.0653 Ha	855970
Lot 86 Deposited Plan 526814	Fee Simple Title	0.0651 Ha	855971
Lot 87 Deposited Plan 526814	Fee Simple Title	0.0663 Ha	855972
Lot 90 Deposited Plan 526814	Fee Simple Title	0.0708 Ha	855973
Lot 1005 Deposited Plan 526814	Fee Simple Title	6.0024 Ha	855974
Lot 806 Deposited Plan 526814	Vesting on Deposit for Local Purpose Reserve	0.4665 Ha	855975
Area GA Deposited Plan 526814	Easement		
Total Area		9.5913 Ha	

Schedule / Memorandum

Land Registration District

North Auckland

Survey Number

LT 526814

Territorial Authority (the Council)

Auckland Council

Schedule of Easements in Gross

Last Edited: 12 Sep 2018 09:44:31

<u>Purpose</u>	<u>Shown</u>	<u>Servient Tenement</u>	<u>Grantee</u>
Right to convey electricity	GA	Lot 806	VECTOR LIMITED
Right to convey electricity and gas	Lot 601	Lot 601	VECTOR LIMITED
Right to convey telecommunications & computer media	Lot 601	Lot 601	CHORUS NEW ZEALAND LIMITED
Right to convey electricity and gas	Lot 602	Lot 602	VECTOR LIMITED
Right to convey telecommunications & computer media	Lot 602	Lot 602	CHORUS NEW ZEALAND LIMITED

Amalgamation Conditions

Last Edited: 10 Sep 2018 15:39:26

LOT 601 HEREON (LEGAL ACCESS) BE HELD AS TWO UNDIVIDED SHARES BY THE OWNERS OF LOTS 90 & 91 HEREON AS TENANTS IN COMMON IN THE SAID SHARES AND THAT INDIVIDUAL COMPUTER REGISTERS BE ISSUED IN ACCORDANCE THEREWITH.

Amalgamation Conditions

Last Edited: 10 Sep 2018 15:39:44

LOT 602 HEREON (LEGAL ACCESS) BE HELD AS TWO UNDIVIDED SHARES BY THE OWNERS OF LOTS 95 & 96 HEREON AS TENANTS IN COMMON IN THE SAID SHARES AND THAT INDIVIDUAL COMPUTER REGISTERS BE ISSUED IN ACCORDANCE THEREWITH.

Notes

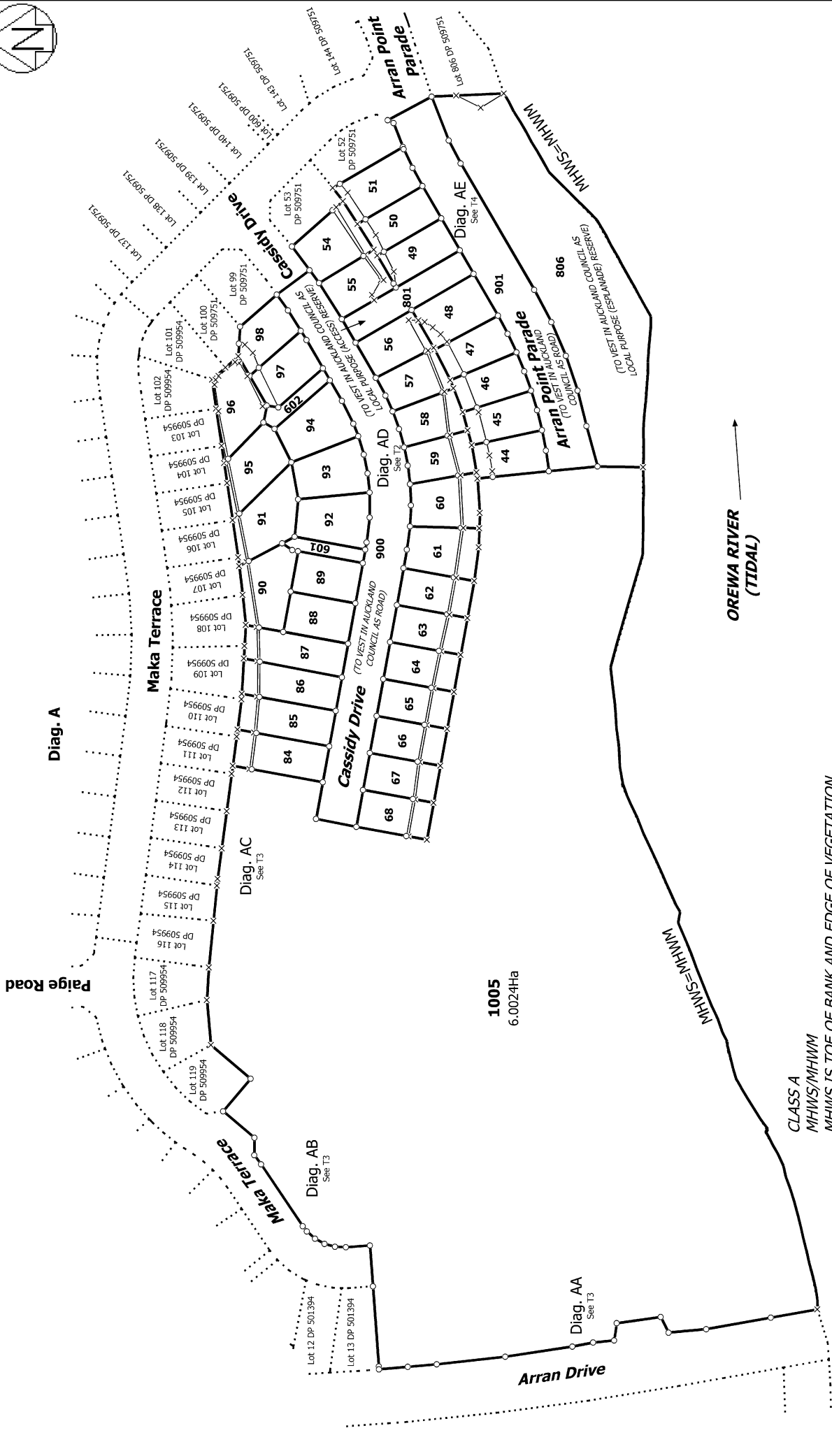
Last Edited: 19 Sep 2018 11:50:08

AREAS FA-FV HEREON ARE TO BE SUBJECT TO LAND COVENANTS.

Notes

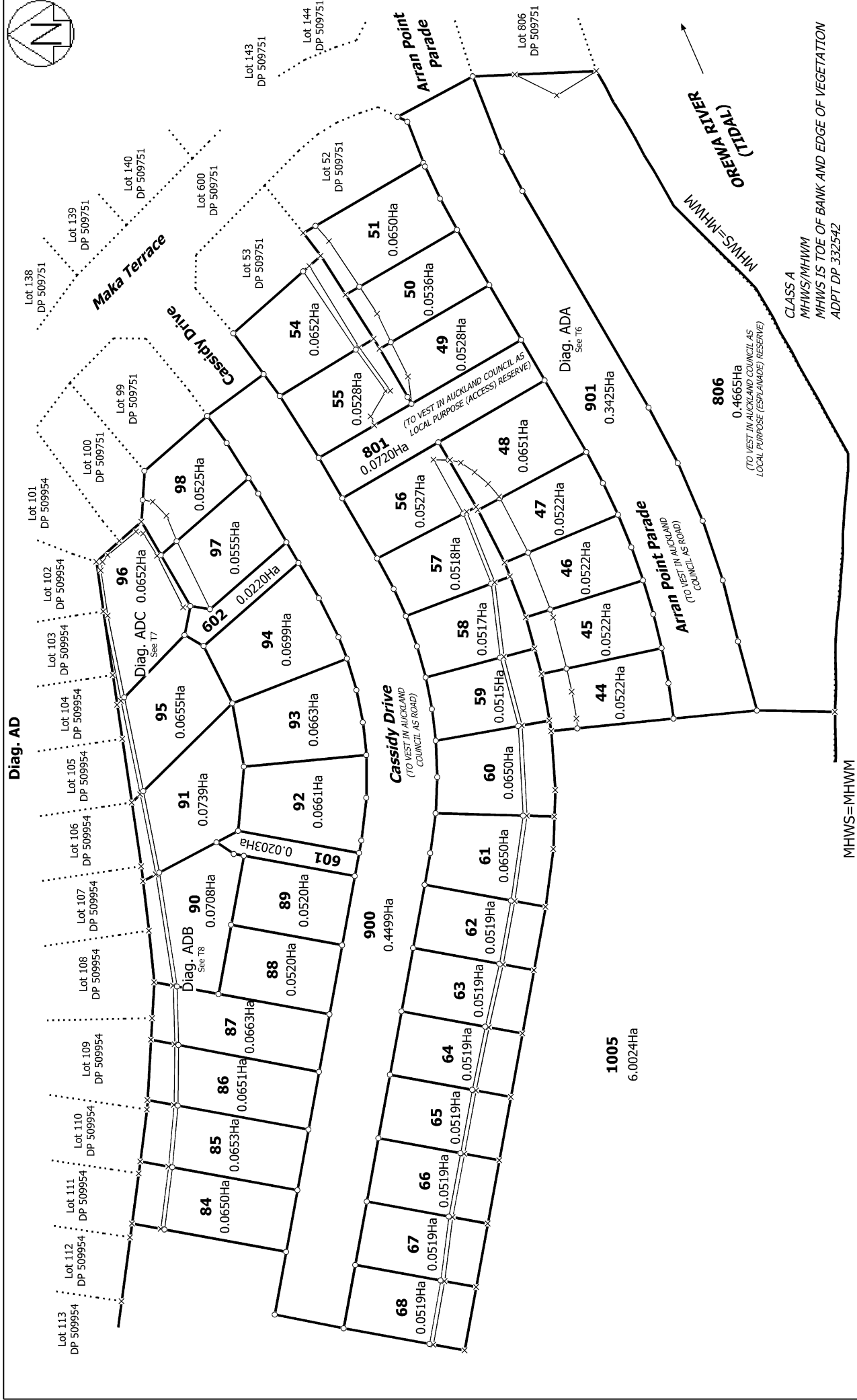
Last Edited: 10 Sep 2018 15:36:18

AREAS AG-AX, BP-BT, CS-CZ, DA-DC, AND FA-FV HEREON ARE TO BE SUBJECT TO LAND COVENANTS.



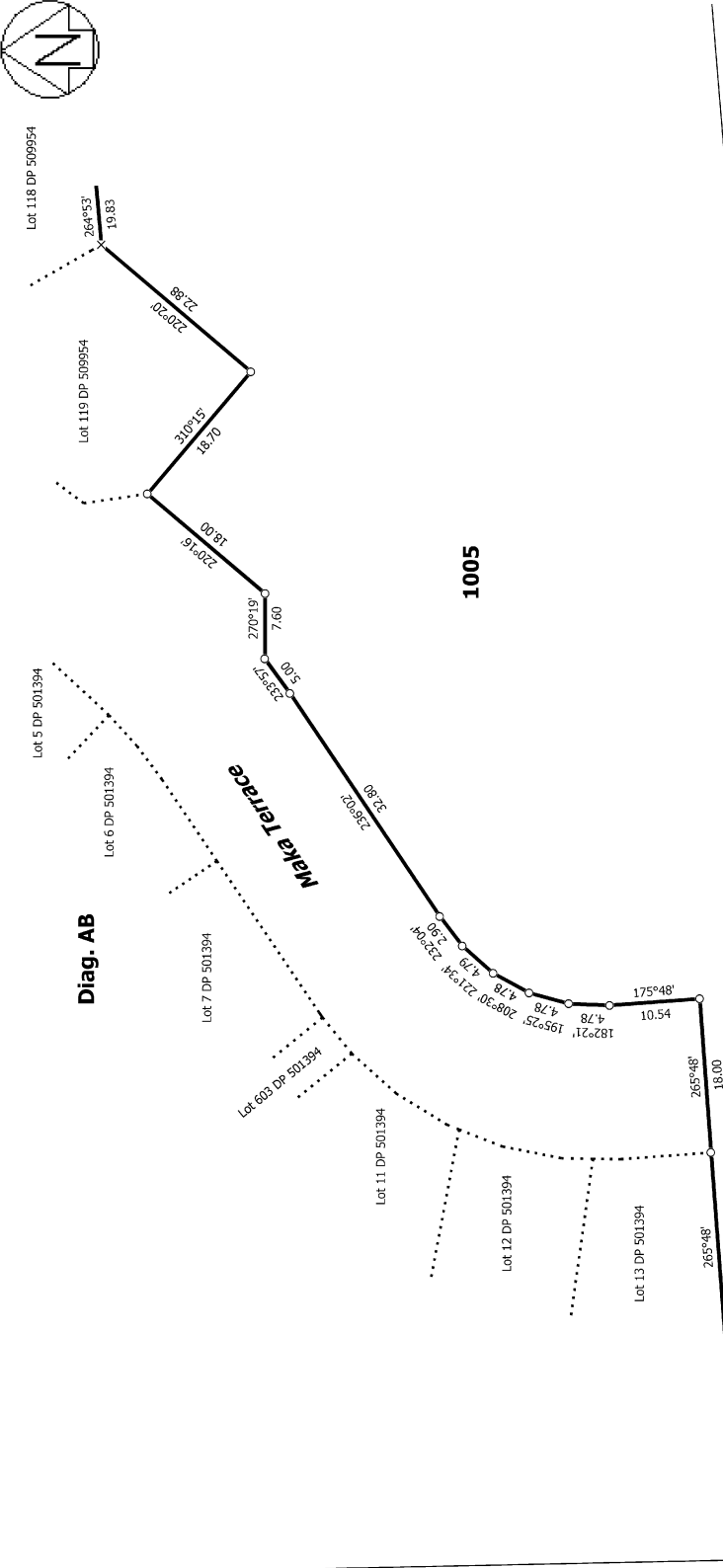
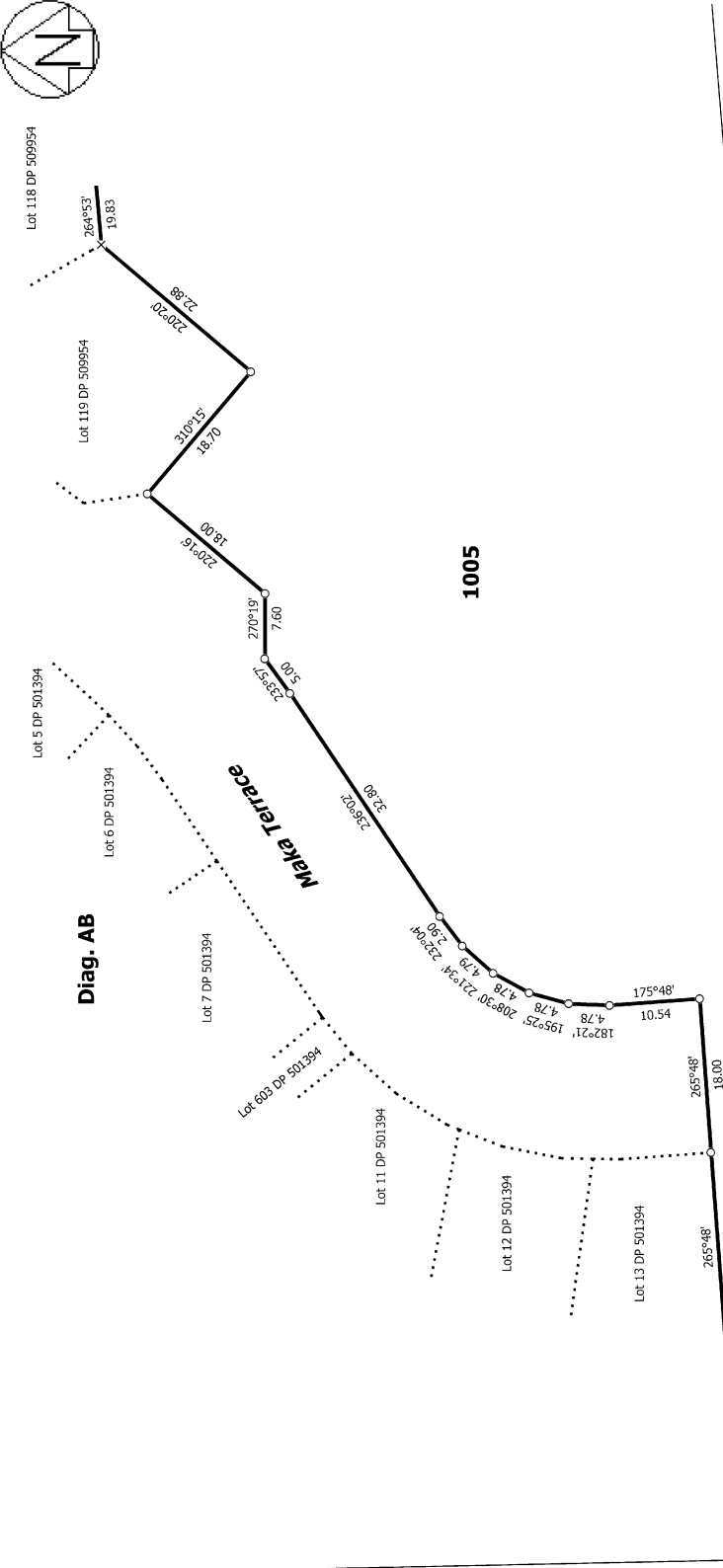
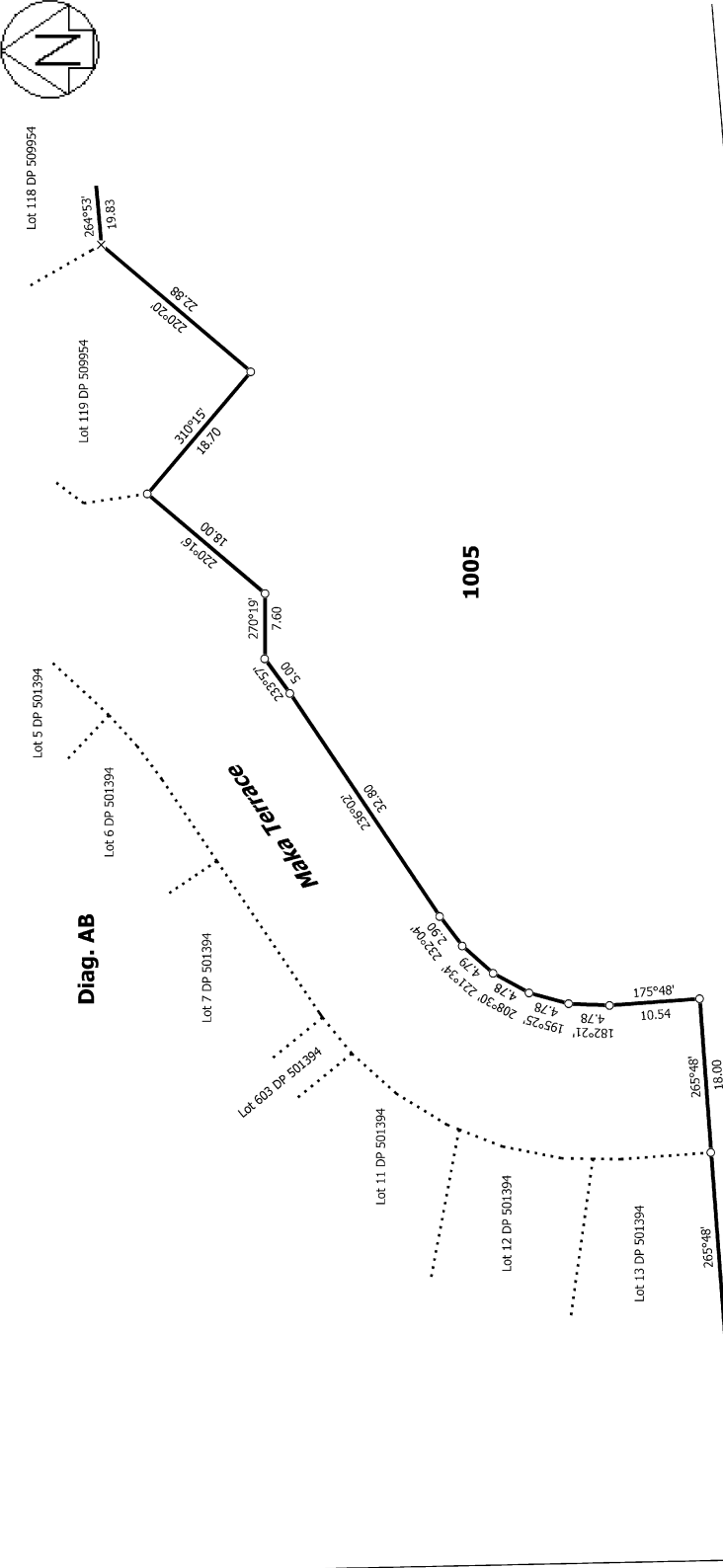
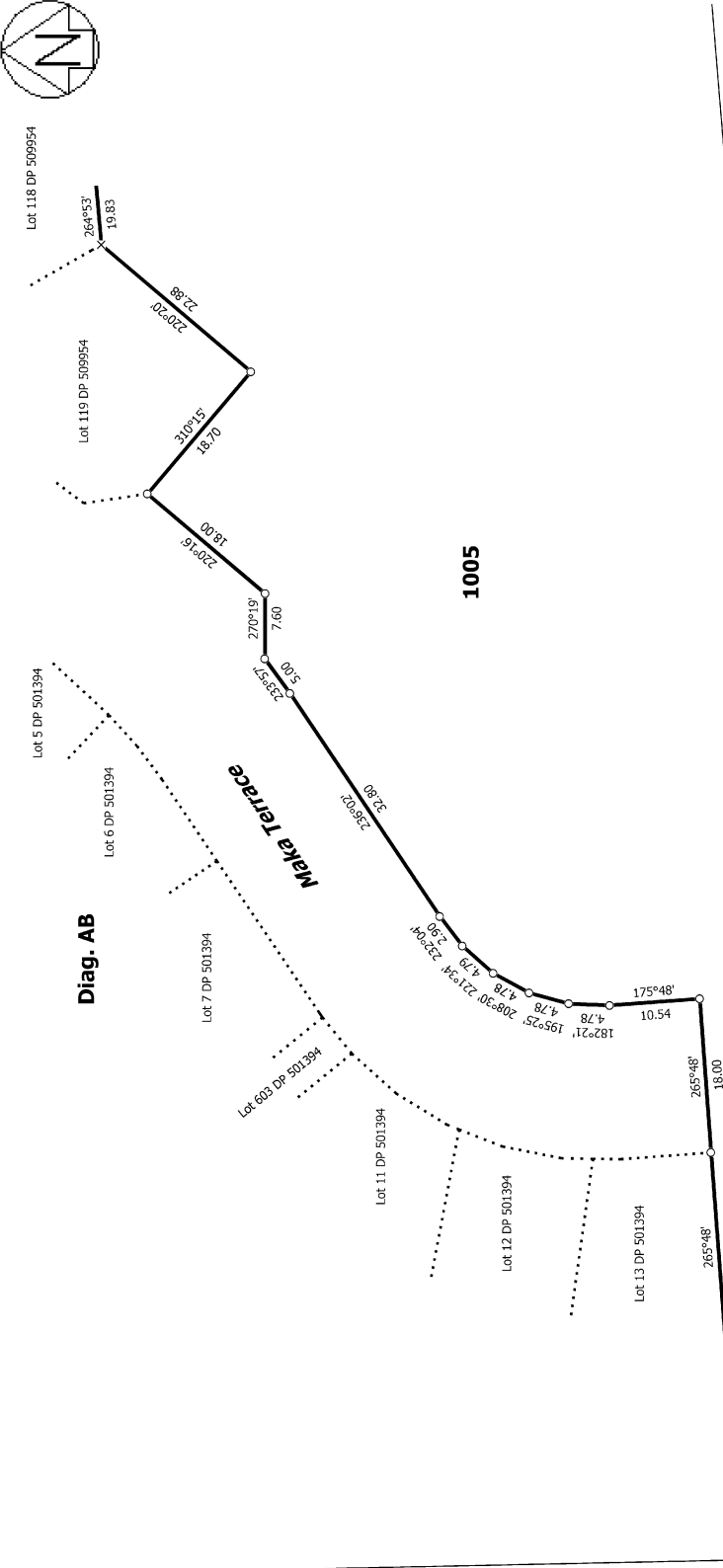
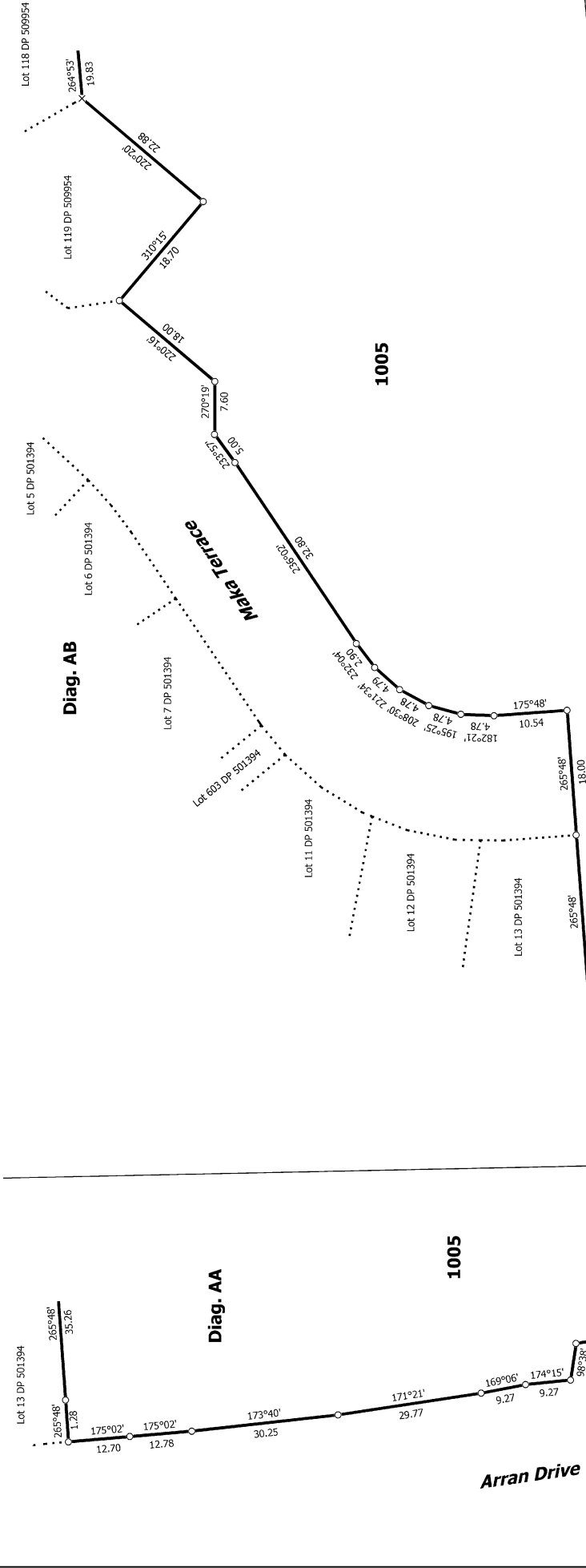
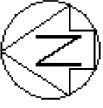
T 1/8

<p>Land District: North Auckland Digitally Generated Plan Generated on: 19/09/2018 12:07:00 PM Page 5 of 12</p>	<p>Lots 44 - 51, 54 - 68, 84 - 98, 601, 602, 801, 806, 900, 901 and 1005 Being a Subdivision of Lot 1004 DP 509751</p>	<p>Surveyor: Kendall Lisa Reid Firm: Wood & Partners Consultants Ltd</p>	<p>Title Plan LT 526814 DRAFT</p>
--	---	---	---



T 2/8

<p>Land District: North Auckland</p> <p>Digitally Generated Plan</p> <p>Generated on: 19/09/2018 12:07:01 PM Page 6 of 12</p>	<p>Lots 44 - 51, 54 - 68, 84 - 98, 601, 602, 801, 806, 900, 901 and 1005 Being a Subdivision of Lot 1004 DP 509751</p>	<p>Surveyor: Kendall Lisa Reid</p> <p>Firm: Wood & Partners Consultants Ltd</p>	<p>Title Plan LT 526814 DRAFT</p>
--	--	---	---



CLASS A
MHWS/MHWM
MHWS IS TOE OF BANK AND EDGE OF VEGETATION
ADPT DP 332542

MHWS=MHWM

T 3/8

<p>Land District: North Auckland</p> <p>Digitally Generated Plan</p> <p>Generated on: 19/09/2018 12:07:01 Page 7 of 12</p>	<p>Lots 44 - 51, 54 - 68, 84 - 98, 601, 602, 801, 806, 900, 901 and 1005 Being a Subdivision of Lot 1004 DP 509751</p>	<p>Surveyor: Kendall Lisa Reid Firm: Wood & Partners Consultants Ltd</p>	<p>Title Plan LT 526814 DRAFT</p>
---	---	--	--



Maka Terrace

Arran Point Parade

OROWA RIVER
(TOTAL)

CLASS A
MHWS/MHWM
MHWS IS TOE OF BANK AND EDGE OF VEGETATION
ADPT DP 332542

T 4/8

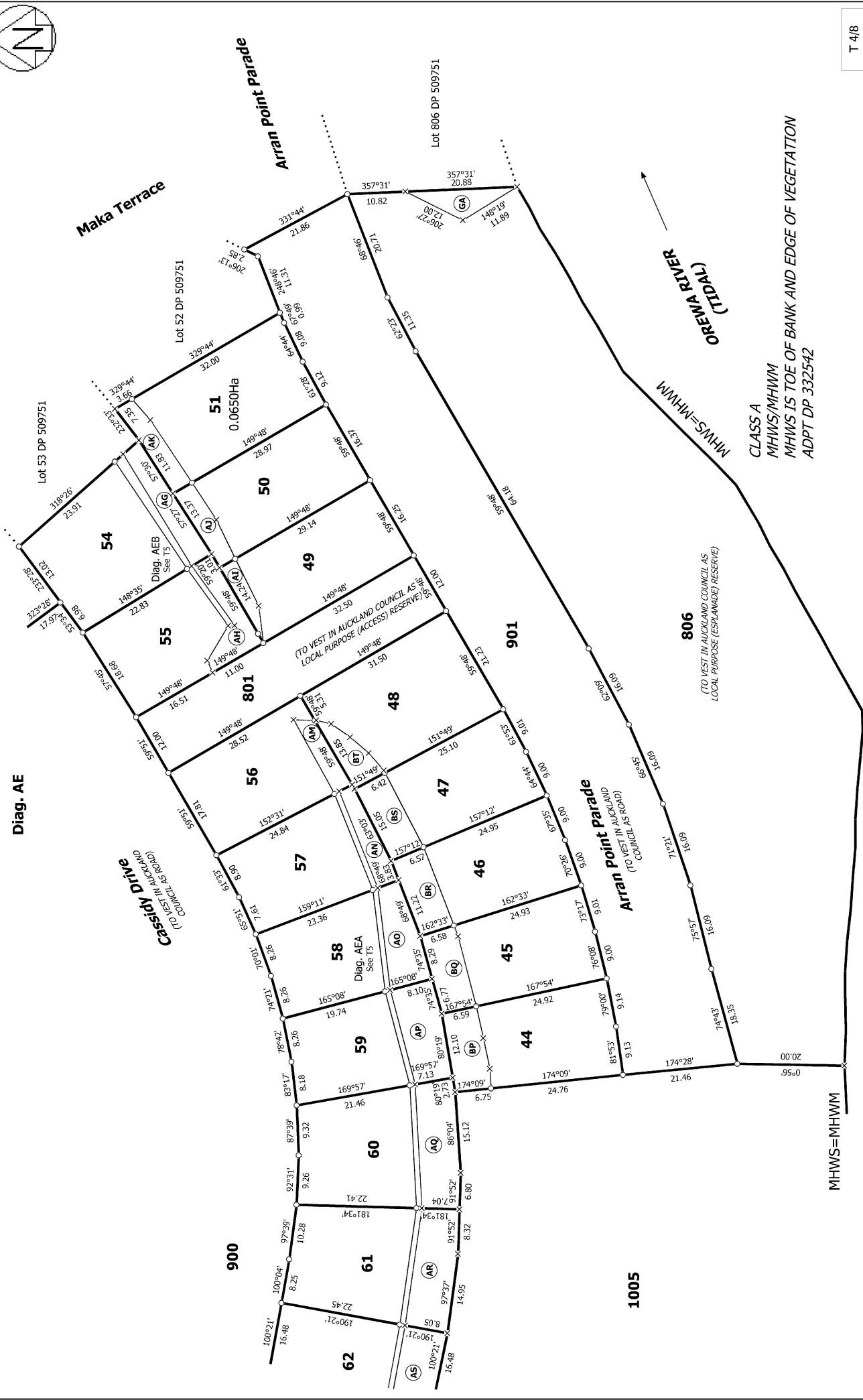
Diag. AE

Cassidy Drive
(TO VEST IN AUCKLAND COUNCIL AS ROAD)

Arran Point Parade
(TO VEST IN AUCKLAND COUNCIL AS ROAD)

806
(TO VEST IN AUCKLAND COUNCIL AS LOCAL PURPOSE (ESPLANADE) RESERVE)

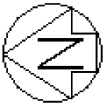
MHWS=MHWM



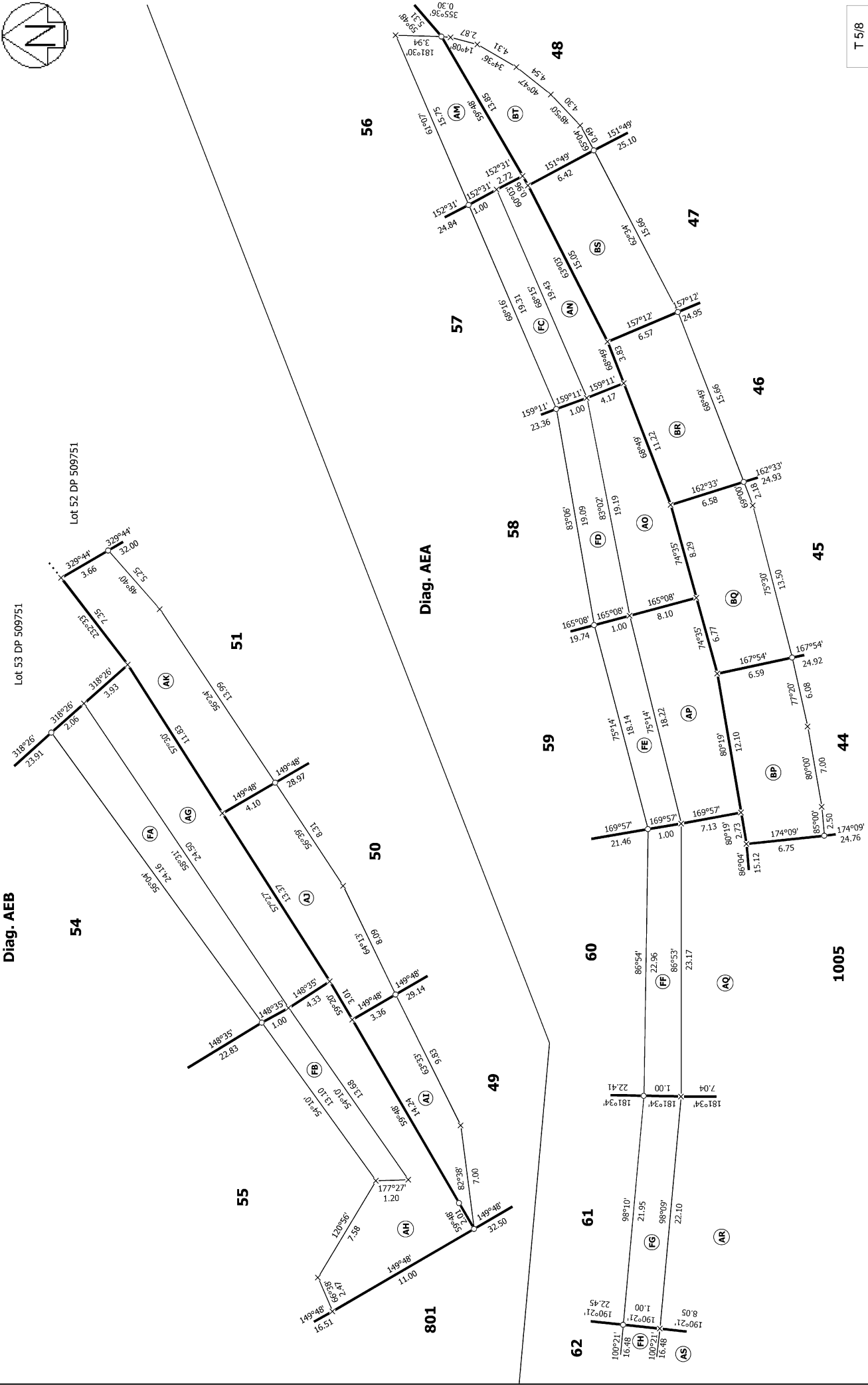
Lots 44 - 51, 54 - 68, 84 - 98, 601, 602, 801, 806, 900, 901 and 1005 Being a Subdivision of Lot 1004 DP 509751

Title Plan
LT 526814
DRAFT

Surveyor: Kendall Lisa Reid
Firm: Wood & Partners Consultants Ltd



Diag. AEB



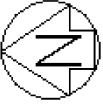
T 5/8

Title Plan
LT 526814
DRAFT

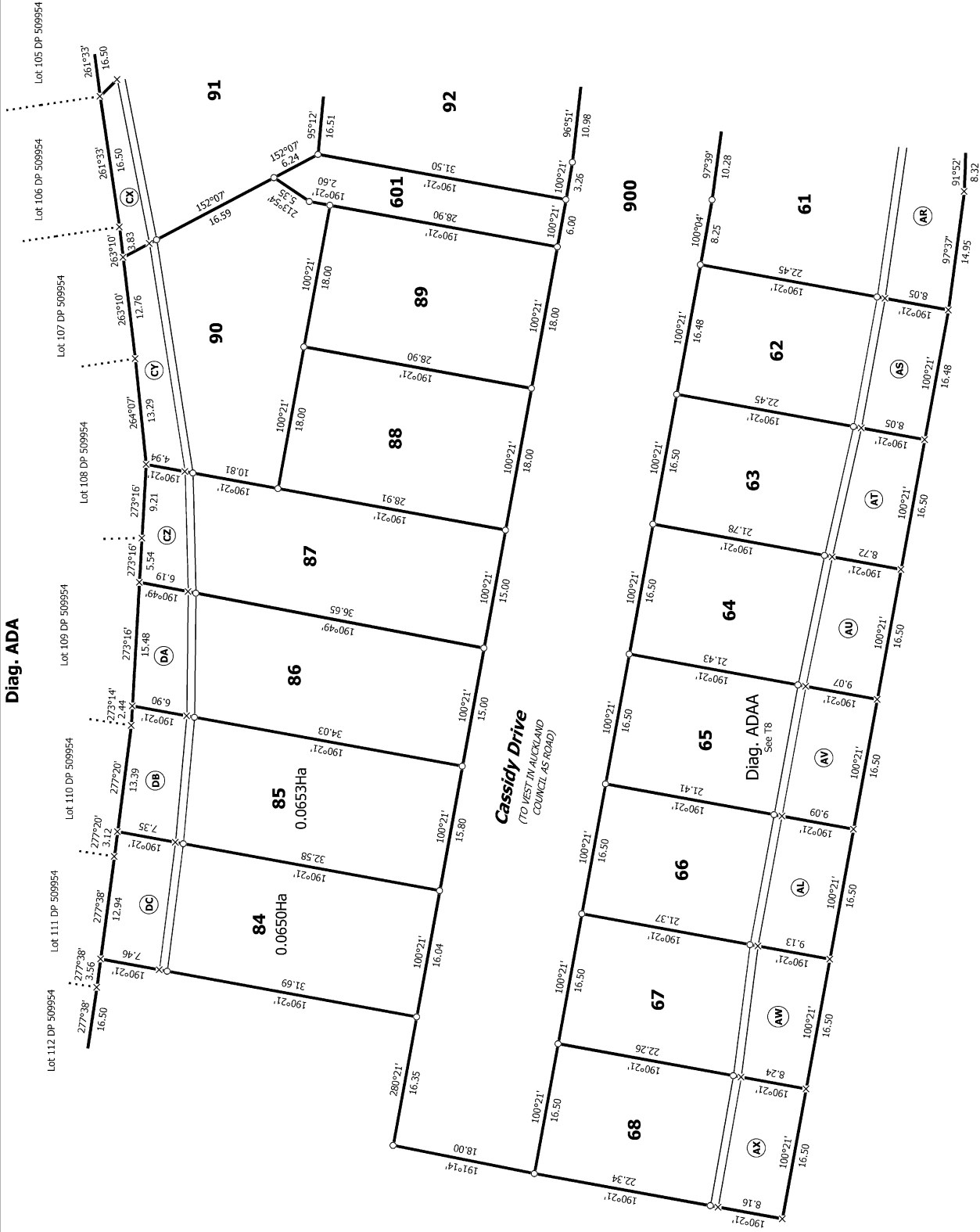
Surveyor: Kendall Lisa Reid
Firm: Wood & Partners Consultants Ltd

Lots 44 - 51, 54 - 68, 84 - 98, 601, 602, 801, 806, 900, 901 and 1005 Being a
Subdivision of Lot 1004 DP 509751

Land District: North Auckland
Digitally Generated Plan
Generated on: 19/09/2018 12:07:01 Page 9 of 12



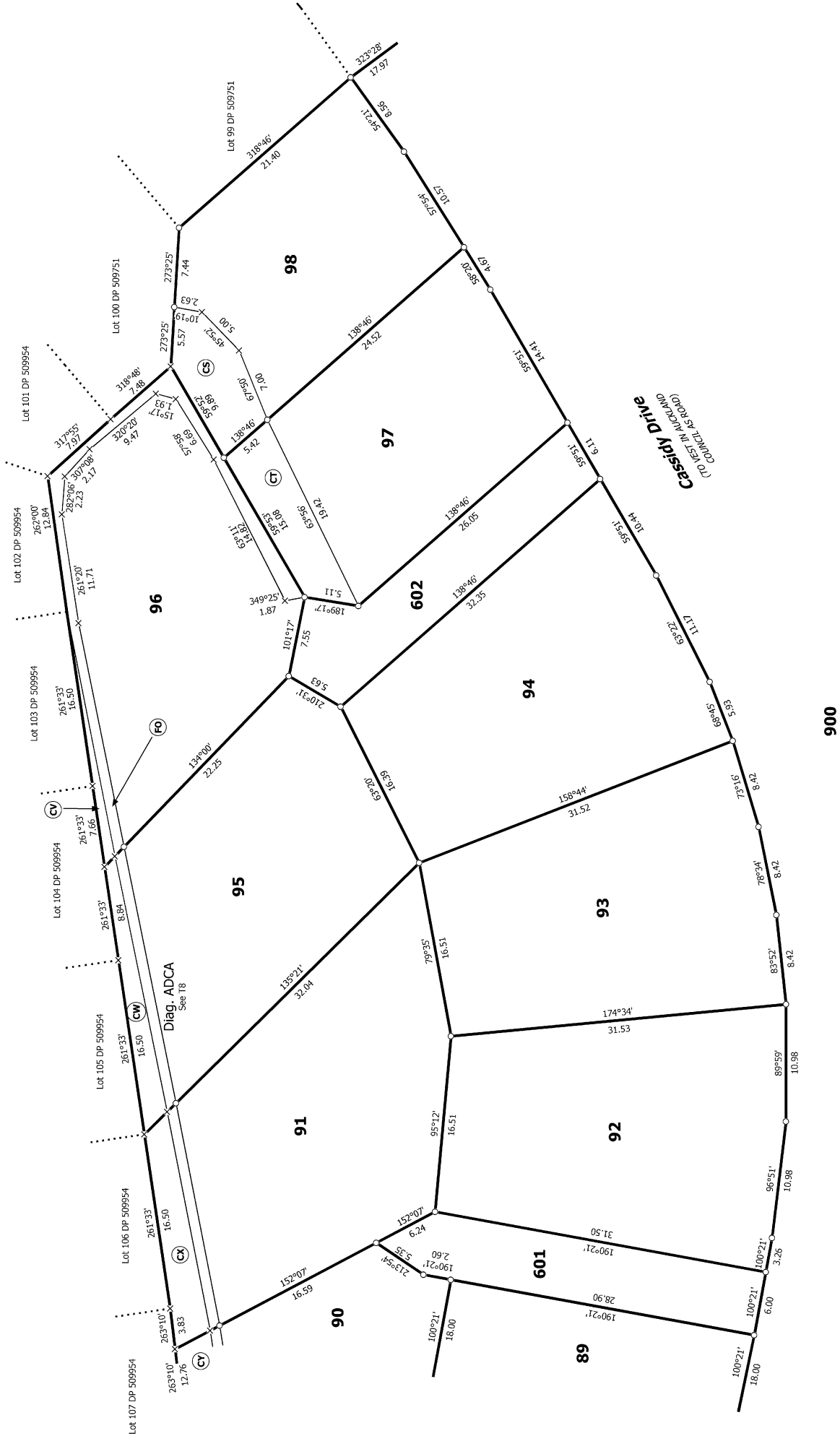
Diag. ADA



T 6/8



Diag. ADC



900

T 7/8

Land District: North Auckland

Digitally Generated Plan

Generated on: 19/09/2018 12:07:00 Page 11 of 12

Lots 44 - 51, 54 - 68, 84 - 98, 601, 602, 801, 806, 900, 901 and 1005 Being a

Subdivision of Lot 1004 DP 509751

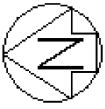
Surveyor: Kendall Lisa Reid

Firm: Wood & Partners Consultants Ltd

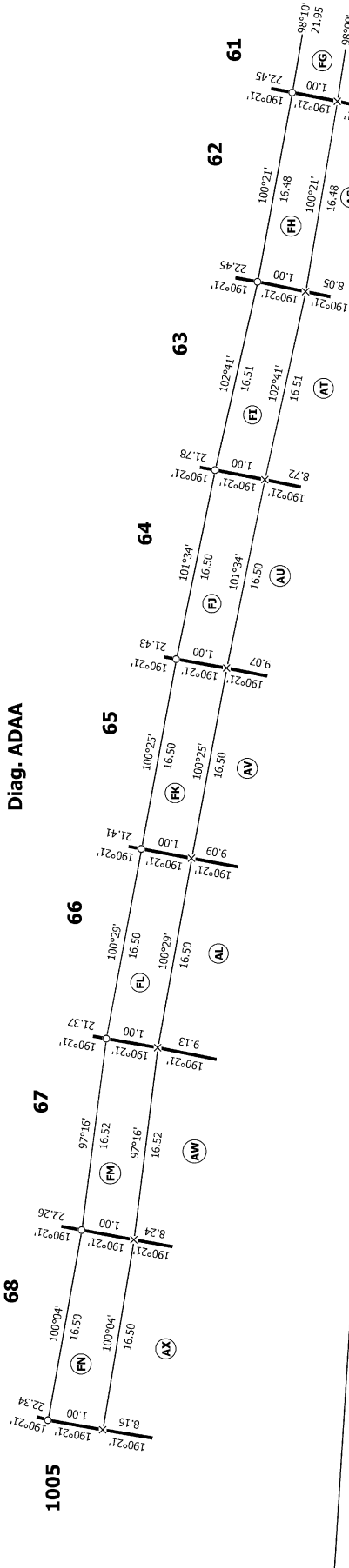
Title Plan

LT 526814

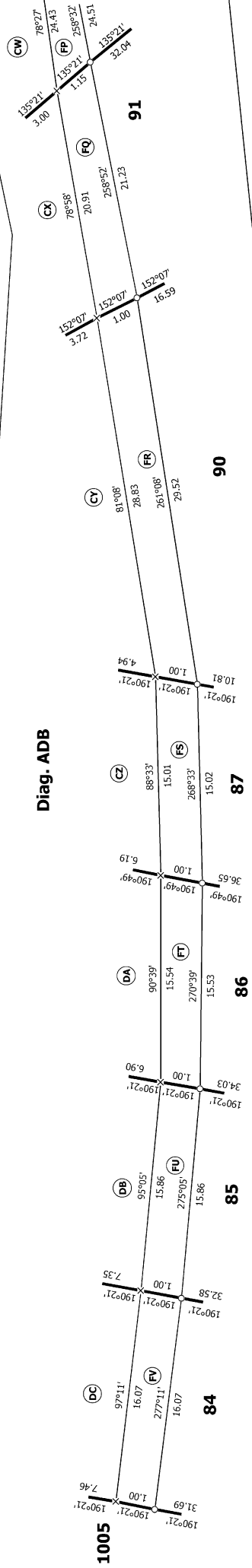
DRAFT



Diag. ADAA



Diag. ADB



Diag. ADCA

