



# Title Plan - LT 558075

---

**Survey Number** LT 558075  
**Surveyor Reference** 37050 Bartlett Block  
**Surveyor** Kendall Lisa Reid  
**Survey Firm** Wood & Partners Consultants Ltd  
**Surveyor Declaration**

---

## Survey Details

**Dataset Description** Lots 1-38, 6000, 6001, and 8000 being a subdivision of Lot 1 DP 445482 and Lot 3 DP 168595  
**Status** Initiated  
**Land District** North Auckland  
**Submitted Date**  
**Survey Class** Class A  
**Survey Approval Date**  
**Deposit Date**

---

## Territorial Authorities

Auckland Council

---

## Comprised In

RT 560327  
RT NA102C/414

---

## Created Parcels

Parcels	Parcel Intent	Area	RT Reference
Lot 3 Deposited Plan 558075	Fee Simple Title	0.0555 Ha	1002230
Lot 4 Deposited Plan 558075	Fee Simple Title	0.0600 Ha	1002231
Lot 7 Deposited Plan 558075	Fee Simple Title	0.0600 Ha	1002234
Lot 8 Deposited Plan 558075	Fee Simple Title	0.0650 Ha	1002235
Lot 9 Deposited Plan 558075	Fee Simple Title	0.0600 Ha	1002236
Lot 10 Deposited Plan 558075	Fee Simple Title	0.0600 Ha	1002237
Lot 11 Deposited Plan 558075	Fee Simple Title	0.0650 Ha	1002238
Lot 12 Deposited Plan 558075	Fee Simple Title	0.0650 Ha	1002239
Lot 13 Deposited Plan 558075	Fee Simple Title	0.0752 Ha	1002240
Lot 14 Deposited Plan 558075	Fee Simple Title	0.0650 Ha	1002241
Lot 15 Deposited Plan 558075	Fee Simple Title	0.0600 Ha	1002242
Lot 16 Deposited Plan 558075	Fee Simple Title	0.0599 Ha	1002243
Lot 17 Deposited Plan 558075	Fee Simple Title	0.0600 Ha	1002244
Lot 18 Deposited Plan 558075	Fee Simple Title	0.0803 Ha	1002245
Lot 19 Deposited Plan 558075	Fee Simple Title	0.0550 Ha	1002246
Lot 20 Deposited Plan 558075	Fee Simple Title	0.0682 Ha	1002247
Lot 21 Deposited Plan 558075	Fee Simple Title	0.0557 Ha	1002248
Lot 22 Deposited Plan 558075	Fee Simple Title	0.0555 Ha	1002249
Lot 23 Deposited Plan 558075	Fee Simple Title	0.0600 Ha	1002250
Lot 24 Deposited Plan 558075	Fee Simple Title	0.0600 Ha	1002251
Lot 25 Deposited Plan 558075	Fee Simple Title	0.0600 Ha	1002252
Lot 26 Deposited Plan 558075	Fee Simple Title	0.0600 Ha	1002253
Lot 27 Deposited Plan 558075	Fee Simple Title	0.0600 Ha	1002254

# Title Plan - LT 558075

---

## Created Parcels

Parcels	Parcel Intent	Area	RT Reference
Lot 28 Deposited Plan 558075	Fee Simple Title	0.0550 Ha	1002255
Lot 29 Deposited Plan 558075	Fee Simple Title	0.0650 Ha	1002256
Lot 30 Deposited Plan 558075	Fee Simple Title	0.0600 Ha	1002257
Lot 31 Deposited Plan 558075	Fee Simple Title	0.0600 Ha	1002258
Lot 32 Deposited Plan 558075	Fee Simple Title	0.0600 Ha	1002259
Lot 33 Deposited Plan 558075	Fee Simple Title	0.0601 Ha	1002260
Lot 34 Deposited Plan 558075	Fee Simple Title	0.0600 Ha	1002261
Lot 35 Deposited Plan 558075	Fee Simple Title	0.0600 Ha	1002262
Lot 36 Deposited Plan 558075	Fee Simple Title	0.0600 Ha	1002263
Lot 37 Deposited Plan 558075	Fee Simple Title	0.0600 Ha	1002264
Lot 38 Deposited Plan 558075	Fee Simple Title	0.0600 Ha	1002265
Lot 6000 Deposited Plan 558075	Fee Simple Title	0.0184 Ha	Multiple
Lot 1 Deposited Plan 558075	Fee Simple Title	0.0601 Ha	1002228
Lot 2 Deposited Plan 558075	Fee Simple Title	0.0555 Ha	1002229
Lot 5 Deposited Plan 558075	Fee Simple Title	0.0601 Ha	1002232
Lot 6 Deposited Plan 558075	Fee Simple Title	0.0600 Ha	1002233
Lot 6001 Deposited Plan 558075	Fee Simple Title	0.0167 Ha	Multiple
Lot 8001 Deposited Plan 558075	Vesting on Deposit for Road	0.7464 Ha	
<b>Total Area</b>		<b>3.1026 Ha</b>	

# Schedule / Memorandum

---

Land Registration District

**North Auckland**

Survey Number

**LT 558075**

Territorial Authority (the Council)

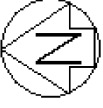
**Auckland Council**

## **Amalgamation Conditions**

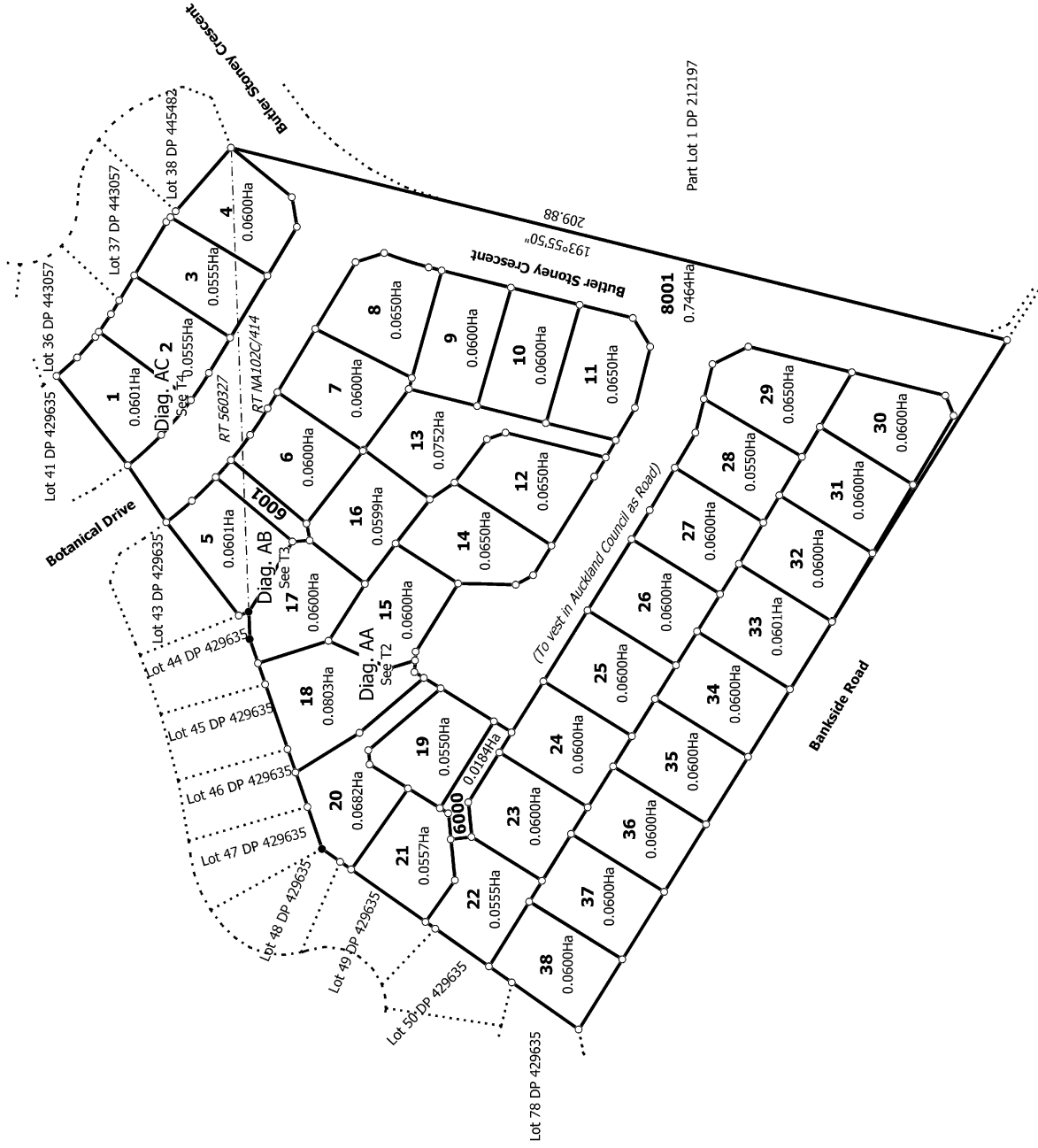
Last Edited: 02 Jun 2021 17:20:31

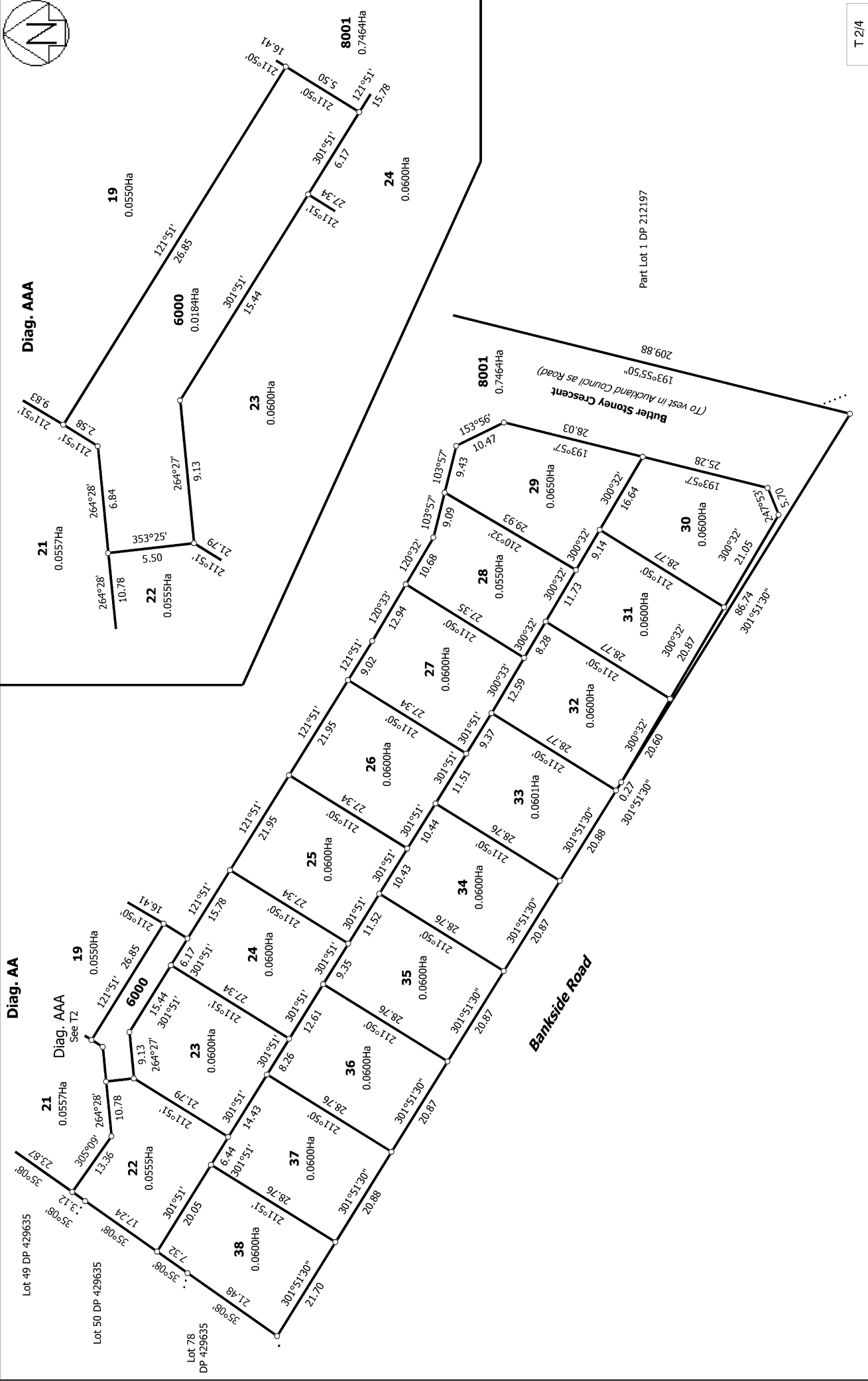
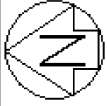
That Lot 6000 hereon (Legal Access) be held as to three undivided 1/3 shares by the owners of Lots 21, 22 and 23 as tenants in common in the said shares and that individual Records of Title be issued in accordance therewith.

That Lot 6001 hereon (Legal Access) be held as to two undivided 1/2 shares by the owners of Lots 16 and 17 as tenants in common in the said shares and that individual Records of Title be issued in accordance therewith.



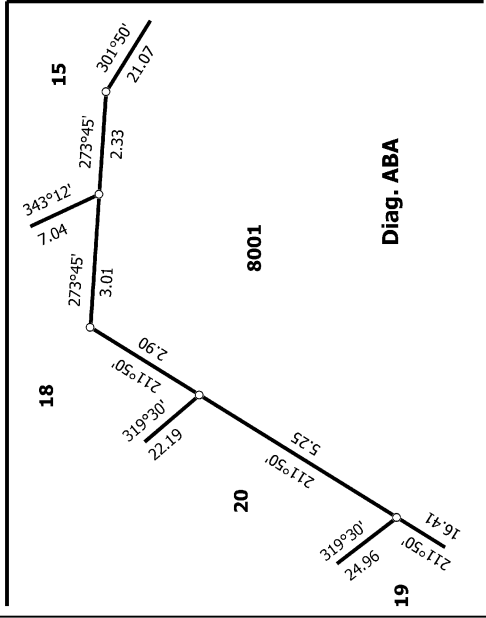
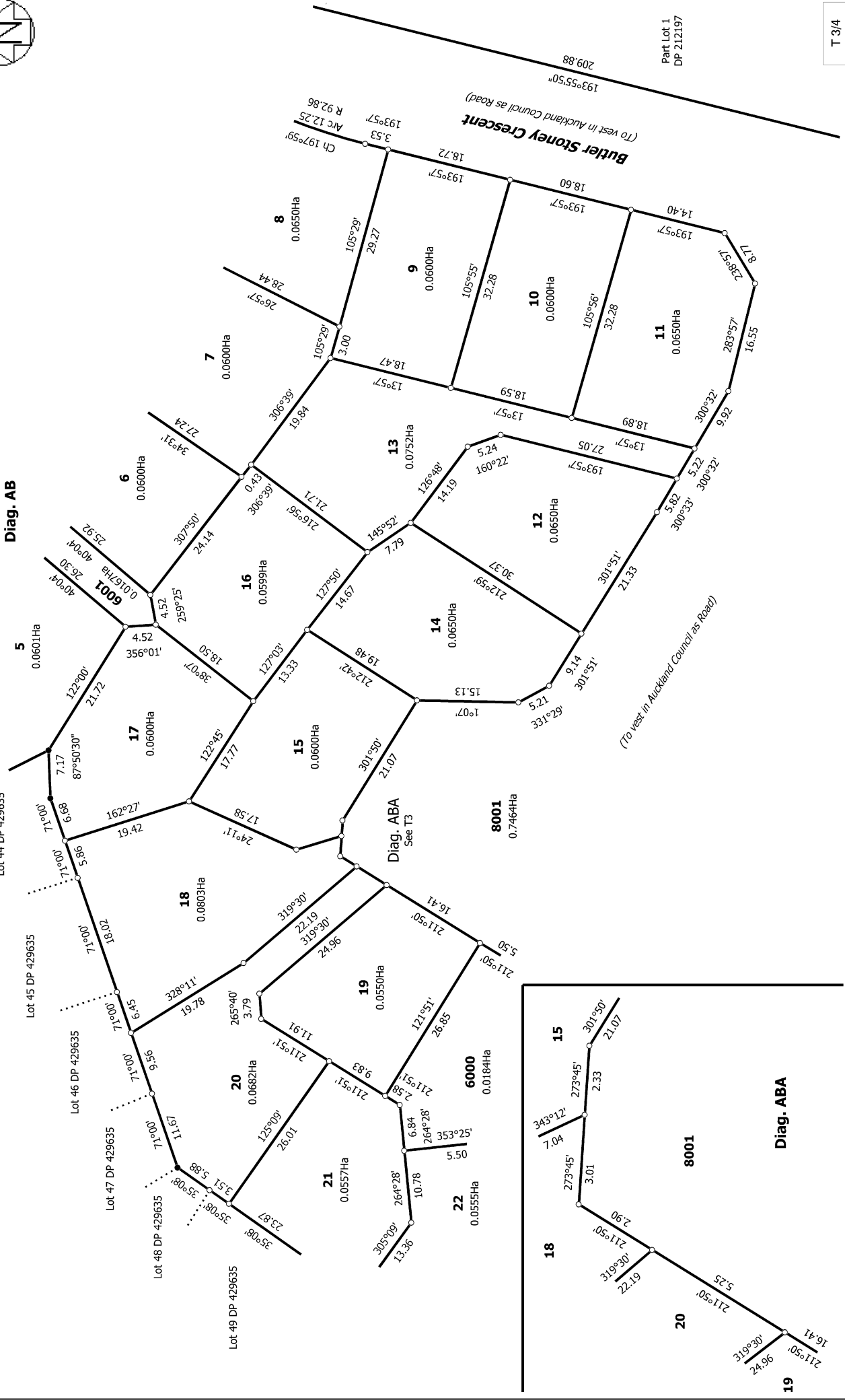
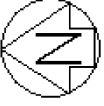
Diag. A

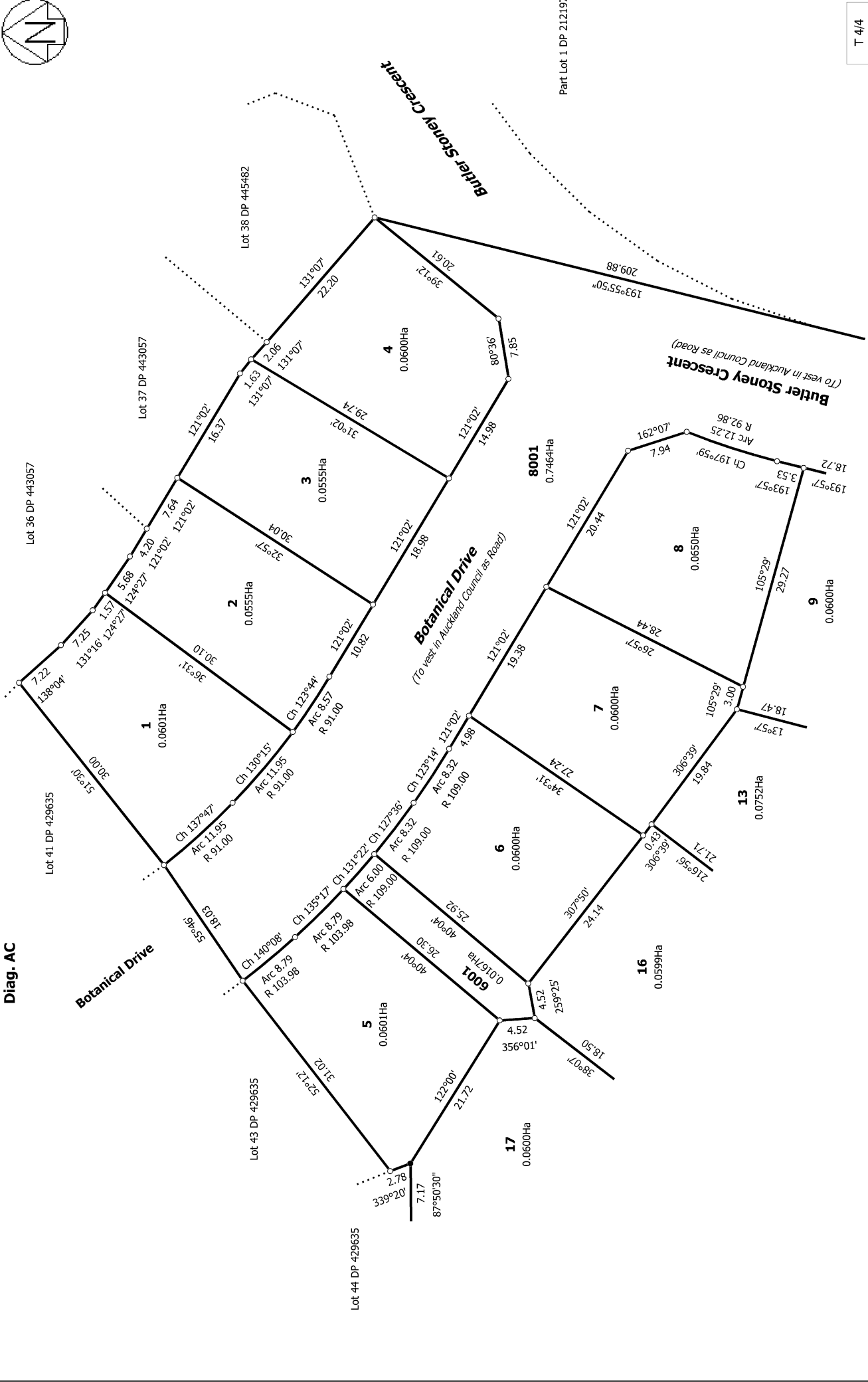




T 2/4

<p>Land District: North Auckland</p> <p><b>Digitally Generated Plan</b></p> <p>Generated on: 03/06/2021 10:53am Page 5 of 7</p>	<p><b>Lots 1-38, 6000, 6001, and 8000 being a subdivision of Lot 1 DP 445482 and Lot 3 DP 168595</b></p>	<p>Surveyor: Kendall Lisa Reid</p> <p>Firm: Wood &amp; Partners Consultants Ltd</p>	<p><b>Title Plan</b></p> <p><b>LT 558075</b></p> <p><b>DRAFT</b></p>
---	--	---	--





T 4/4

Land District: North Auckland  
**Digitally Generated Plan**  
 Generated on: 03/06/2021 10:53am Page 7 of 7

Surveyor: Kendall Lisa Reid  
 Firm: Wood & Partners Consultants Ltd

**Title Plan**  
**LT 558075**  
**DRAFT**

**Lots 1-38, 6000, 6001, and 8000 being a subdivision of Lot 1 DP 445482 and Lot 3 DP 168595**